

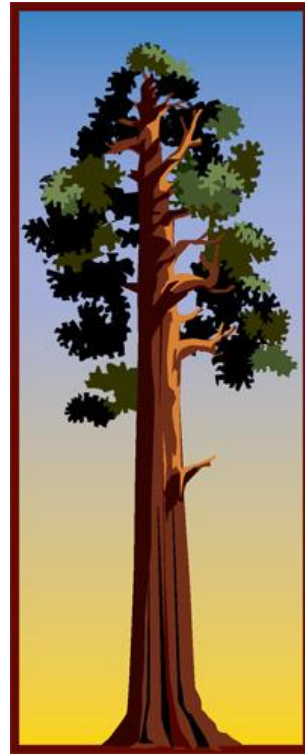
Findability

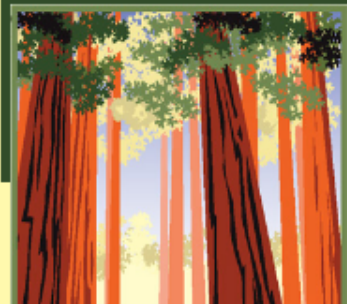
finding Fire in the GSNM DEIS

NAEP 2012

gsnm.ecr.gov

Carie Fox, Philip Murphy, Rich Fairbanks





GIANT SEQUOIA NATIONAL MONUMENT

Decision Framework for the Draft EIS



- HOME
- DEIS Document
- Comment
- Background/Help

- Find Out
- Be the Boss
- Rationale
- Alternatives



Sequoia National Forest
US Institute for Environmental Conflict Resolution

Explore the Alternatives for the Monument

Influence the Final Plan

The comment period for the Draft EIS closed Friday, December 3rd

Find out



What are the alternatives?
Why, in the Draft EIS, did B and F rate so well?
How did your key issues stack up?

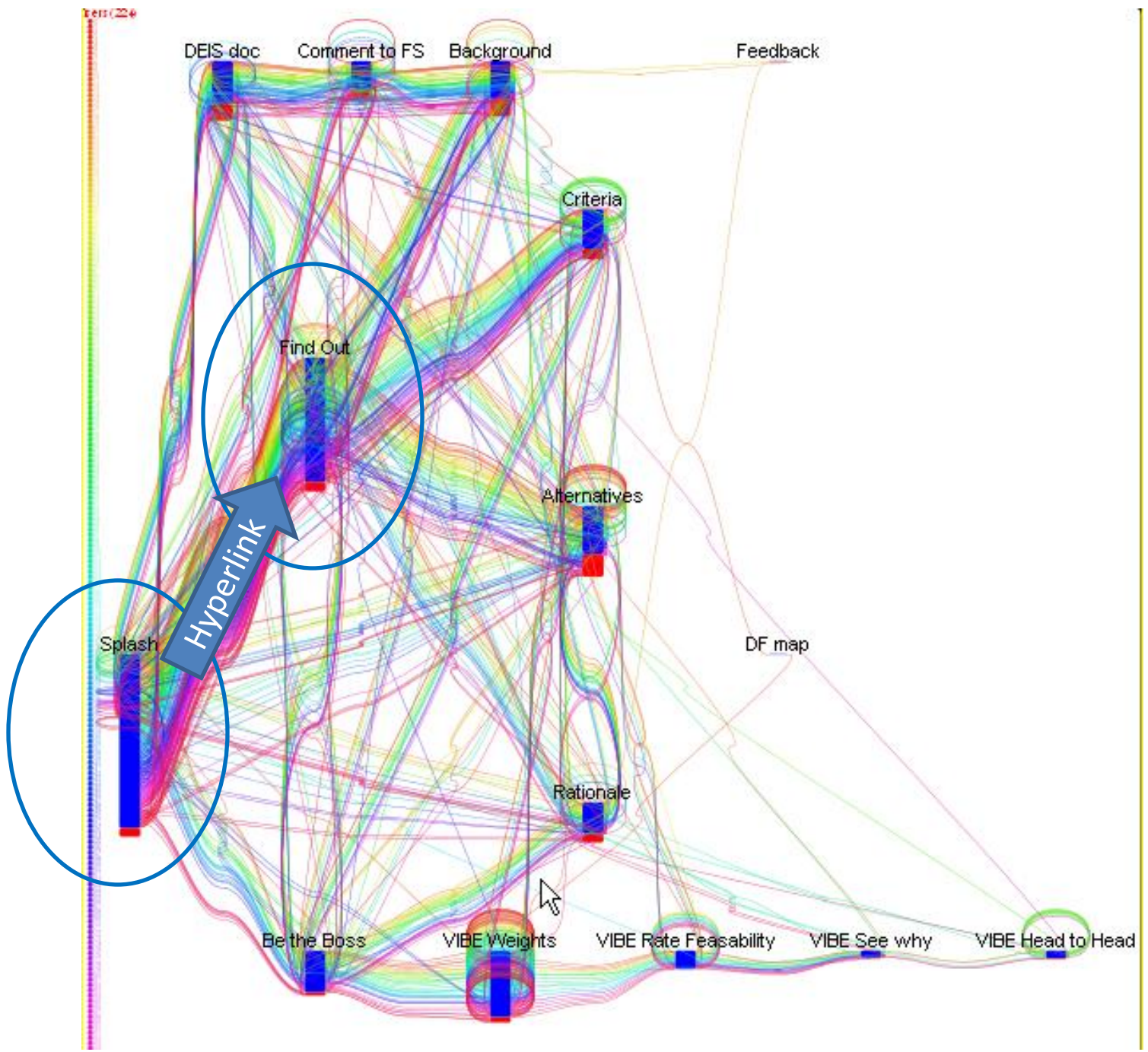
Be the Boss

See how your values fare given the ratings.
You rate how realistic the alternatives are.
See what makes the difference.

Slideshow overview

Watch this narrated slideshow or [click here for a printable version \(PDF\)](#).

GSNM 2010 DEIS
Comment Period
Visitor Tracks



GIANT SEQUOIA NATIONAL MONUMENT

Decision Framework for the Draft EIS



- HOME
- DEIS Document
- Comment
- Background/Help



Find Out

Be the Boss

Rationale

Alternatives

Sequoia National Forest

US Institute for Environmental Conflict Resolution

Find out how the alternatives stack up

Click on any part of this table, including the **bars**, to find out more about whatever you want to find out about.

Criteria	Alt A	Alt B	Alt C	Alt D	Alt E	Alt F
Protect individual objects	■	■	■	■	■	■
Increase ecosystem health	■	■	■	■	■	■
Manage/allow fire	■	■	■	■	■	■
Increase enjoyment of the Monument	■	■	■	■	■	■
Foster socio-economics	■	■	■	■	■	■
Create a cost-effective plan	■	■	■	■	■	■
Create a feasible plan	■	■	■	■	■	■
Not rated by Forest Service						
Comply with legal requirements						

GIANT SEQUOIA NATIONAL MONUMENT

Decision Framework for the Draft EIS



HOME

DEIS Document

Comment

Background/Help

Find Out

Be the Boss

Rationale

Alternatives



Sequoia National Forest

US Institute for
Environmental Conflict
Resolution

Find out how the alternatives stack up



Click on any part of this table, including the **bars**, to find out more about whatever you want to find out about.

Criteria	Alt A	Alt B	Alt C	Alt D	Alt E	Alt F
Protect individual objects						
Increase ecosystem health						
Manage/allow fire						
Increase enjoyment of the Monument						
Foster socio-economics						
Create a cost-effective plan						
Create a feasible plan						
Comply with legal requirements	Not rated by Forest Service					
	Meets all applicable laws and regulations					



GIANT SEQUOIA NATIONAL MONUMENT

Decision Framework for the Draft EIS



- HOME
- DEIS Document
- Comment
- Background/Help

- Find Out
- Be the Boss
- Rationale
- Alternatives



Sequoia National Forest
US Institute for
Environmental Conflict
Resolution

[Return to Top](#)

Alternative F

Alternative F would protect the objects of interest and manage Monument resources to promote resiliency, adaptability to climate change, and heterogeneity across ecosystems. This alternative responds to the issues of tree removal, fuels management/community protection, fires spreading to tribal lands, and methods for giant sequoia regeneration. It is similar to Alternative B, except in vegetation management. Alternative F contains no upper diameter limits for tree cutting and removal when clearly needed for ecological restoration and maintenance or public safety, except for giant sequoias. This would allow more flexibility in treatment methods for forest health and ecological restoration.

Read more in the Draft EIS

[DEIS Vol I, Chapter 2, Alternatives Considered in Detail, Alternative F.]

To read this section of the Draft EIS online, click [here to go to the Limehouse GSNM Comment Portal](#).

[Return to Top](#)



GIANT SEQUOIA NATIONAL MONUMENT

Decision Framework for the Draft EIS



- HOME
- DEIS Document
- Comment
- Background/Help

- Find Out
- Be the Boss
- Rationale
- Alternatives

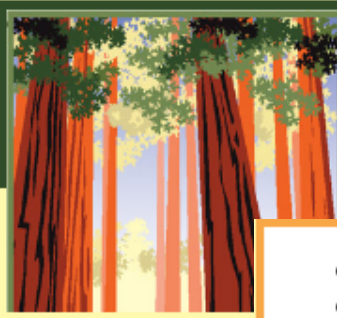


Sequoia National Forest
 US Institute for Environmental Conflict Resolution

Find out how the alternatives stack up

Click on any part of this table, including the **bars**, to find out more about whatever you want to find out about.

Criteria	Alt A	Alt B	Alt C	Alt D	Alt E	Alt F
Protect individual objects	■	■	■	■	■	■
Increase ecosystem health	■	■	■	■	■	■
Manage/allow fire	■	■	■	■	■	■
Increase enjoyment of the Monument	■	■	■	■	■	■
Foster socio-economics	■	■	■	■	■	■
Create a cost-effective plan	■	■	■	■	■	■
Create a feasible plan	■	■	■	■	■	■
Comply with legal requirements	Not rated by Forest Service					
	Meets all applicable laws and regulations					



GIANT SEQUOIA NATIONAL MONUMENT

Decision Framework for the Draft EIS



- HOME
- DEIS Document
- Comment
- Background/Help

Find Out

Be the Boss

Rationale

Alternative



Sequoia National F

US Institute for Environmental Conflict Resolution

- [Increase efforts to restore natural fire processes](#)
- [Protect objects outside WUIs, Groves & at risk Habitat](#)
- [Protect objects in WUIs, Groves & at risk Habitat](#)
- [No "unwanted" fire](#)
- [Minimize impacts of Air Quality on people](#)
- [Effect on aesthetics \(Scenery\)](#)
- [Protect Human Safety outside WUI](#)
- [Protecting Human Safety IN WUI](#)

Read more in the Draft EIS

[DEIS Vol I, Chapters 3 and 4, Air Quality and Fires and Fuels sections.]

To read the relevant sections of the Draft EIS online on the Limehouse GSNM Comment Portal, follow these links:

- click [here for Section on Fire](#)
- click [here for Section on Air](#)

[Return to Find Out](#)

Chapter 3. pdf (application/pdf Object) - Mozilla Firefox

File Edit View History Bookmarks Tools Help

Descartes: Scienti... The Enlightenmen... Schedules by Sea... Science, Colonialis... Brainstorming Doe... Hojoki JRaceman Web R... Chapter3.pdf

www.fs.fed.us/r5/sequoia/gsnm/deis/Chapter3.pdf

20 / 260 101% Sign fire

Fire and Fuels

Sustainable ecosystem-based management, which is now the standard on most public lands, will be successful if fire policy and management are: (1) based on ecological principles; (2) integrated with other resource disciplines, such as wildlife, hydrology, and silviculture; and (3) are relevant for applications at large spatial and temporal scales (Keeley et al. 2009).

Within the Monument, it is desirable for fire to recur in its characteristic pattern and resume its ecological role. Restoring fire regimes would greatly enhance the resilience of ecosystems to uncharacteristically severe or damaging fires. While the restoration of fire is likely to result in long-term reduction in susceptibility to large damaging fires, consideration of human health and safety and other resource values will require prioritization of fires to specific emphasis areas. In other areas permanent changes to fire regimes may result in long-term changes to the geographic distribution of ecosystems.

Characteristic Fire Regimes

Restoring and maintaining long-term sustainability and health of fire-affected systems requires management objectives and strategies that are adapted to and consistent with the fire regimes of targeted ecosystems (Keeley et al. 2009). Spatial variation in forest structure is important for maintaining the ecological characteristics of ecosystems that provide wildlife habitat, ecosystem resilience, and biodiversity. Heterogeneous forest structures are characteristic, and "average" stand conditions are rare in active-fire Sierran mixed conifer forests (North et al. 2009). Knapp et al. (2009) recommend that prescribed burning be conducted at various times of the year or with different prescriptions (firing patterns) to maximize diversity and to alleviate the potential for undesired changes that may come with repeated burning at a single time of the year.



GIANT SEQUOIA NATIONAL MONUMENT

Public Comment Portal

[Accessibility](#) | [Sequoia](#) | [Contact Us](#)



[Login / Register](#)

[Who Said What?](#)

[Help](#)

[Print](#)

[Home](#)

403 - Sorry...

This page is no longer available for viewing. If you have any queries regarding this, please click on the Contact Us link above.

[Terms and Conditions](#)

Powered by Objective Online Software ©






GIANT SEQUOIA NATIONAL MONUMENT

Decision Framework for the Draft EIS



- HOME
- DEIS Document
- Comment
- Background/Help

- Find Out
- Be the Boss
- Rationale
- Alternative



Sequoia National F
US Institute fo
Environmental Con
Resolution

- [Increase efforts to restore natural fire processes](#)
- [Protect objects outside WUIs, Groves & at risk Habitat](#)
- [Protect objects in WUIs, Groves & at risk Habitat](#)
- [No "unwanted" fire](#)
- [Minimize impacts of Air Quality on people](#)
- [Effect on aesthetics \(Scenery\)](#)
- [Protect Human Safety outside WUI](#)
- [Protecting Human Safety IN WUI](#)

Read more in the Draft EIS

[DEIS Vol I, Chapters 3 and 4, Air Quality and Fires and Fuels sections.]

To read the relevant sections of the Draft EIS online on the Limehouse GSNM Comment Portal, follow these links:

- click [here for Section on Fire](#)
- click [here for Section on Air](#)

[Return to Find Out](#)



GIANT SEQUOIA NATIONAL MONUMENT

Decision Framework for the Draft EIS



- HOME
- DEIS Document
- Comment
- Background/Help

- Find Out
- Be the Boss
- Rationale
- Alternatives



Find out how the alternatives stack up

Click on any part of this table, including the **bars**, to find out more about whatever you want to find out about.

Criteria	Alt A	Alt B	Alt C	Alt D	Alt E	Alt F
Protect individual objects						
Increase ecosystem health						
Manage/allow fire						
Increase enjoyment of the Monument						
Foster socio-economics						
Create a cost-effective plan						
Create a feasible plan	Not rated by Forest Service					
Comply with legal requirements	Meets all applicable laws and regulations					



GIANT SEQUOIA NATIONAL MONUMENT

Decision Framework for the Draft EIS



- HOME
- DEIS Document
- Comment
- Background/Help

- Find Out
- Be the Boss
- Rationale
- Alternatives



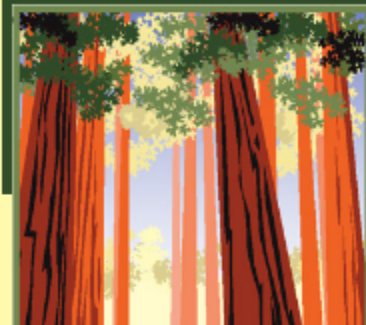
Sequoia National Forest
US Institute for Environmental Conflict Resolution

Unpack the stack: alternatives & subcriteria

Click on any part of this table, including the **bars**, to find out more about whatever you want to find out about.

Ratings for subcriteria of "Manage/allow fire"

sub-criteria	Alt A	Alt B	Alt C	Alt D	Alt E	Alt F
Increase efforts to restore natural fire processes						
Protect objects out WUIs, Groves & @ risk Habitat						
Protect objects IN WUIs, Groves & @ risk Habitat						
No "unwanted" fire						
Minimize impacts of AQ on people						
Effect on aesthetics (Scenery)						
Protect Human Safety outside WUI						
Protecting Human Safety IN WUI						
Subtotal (all weights equal)						



GIANT SEQUOIA NATIONAL MONUMENT

Decision Framework for the Draft EIS



- [HOME](#)
- [DEIS Document](#)
- [Comment](#)
- [Background/Help](#)

[Find Out](#)

[Be the Boss](#)

[Rationale](#)

[Alternatives](#)



Sequoia National Forest
US Institute for Environmental Conflict Resolution

Effect on aesthetics (Scenery)

Features for this sub-criterion include the number of large trees visible, gaps and opening between trees to provide varied viewing depths, and the appearance of mortality in the form of red-needled, dead, or burnt trees.

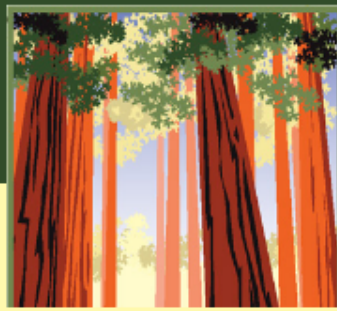
Research shows people consistently prefer scenery with:

- a) Large trees,
- b) Forests with more open structure that people can see through,
- c) Variety in forest and landscape composition, and
- d) Views to distinctive ridgelines, landmarks, and landscape features.

People consistently consider the following as ugly (according to research):

- a) Downed wood from management activities,
- b) Extensive areas of dead or dying trees or other vegetation,
- c) Monotonous or homogeneous landscapes,
- d) Dead wood and scorched trunks, and
- e) Overgrown forests with dense understories.

Educating the public on the need for fire for healthy forests can change the public perception of the short-term negative effects of light and moderate burns



GIANT SEQUOIA NATIONAL MONUMENT

Decision Framework for the Draft EIS



- HOME
- DEIS Document
- Comment
- Background/Help

- Find Out
- Be the Boss
- Rationale
- Alternatives



Sequoia National Forest
US Institute for Environmental Conflict Resolution

Unpack the stack: alternatives & subcriteria



Click on any part of this table, including the **bars**, to find out more about whatever you want to find out about.

Ratings for subcriteria of "Manage/allow fire"

sub-criteria	AltA	AltB	AltC	AltD	AltE	AltF
Increase efforts to restore natural fire processes	■	■	■	■	■	■
Protect objects out WUIs, Groves & @ risk Habitat	■	■	■	■	■	■
Protect objects IN WUIs, Groves & @ risk Habitat	■	■	■	■	■	■
No "unwanted" fire	■	■	■	■	■	■
Minimize impacts of AQ on people	■	■	■	■	■	■
Effect on aesthetics (Scenery)	■	■	■	■	■	■
Protect Human Safety outside WUI	■	■	■	■	■	■
Protecting Human Safey IN WUI	■	■	■	■	■	■
Subtotal (all weights equal)	■	■	■	■	■	■

GIANT SEQUOIA NATIONAL MONUMENT

Decision Framework for the Draft EIS

[HOME](#)[DEIS Document](#)[Comment](#)[Background/Help](#)

Rating rationale

Alternatives A and E would produce no change to aesthetics. Current management practices would continue.

Alternatives, B and F would slightly positively affect aesthetics. These alternatives would allow mechanical treatment, prescribed fire, and managed wildfire.

Alternative C would slightly negatively affect aesthetics. This alternative would have a preference for prescribed fire and managed wildfire.

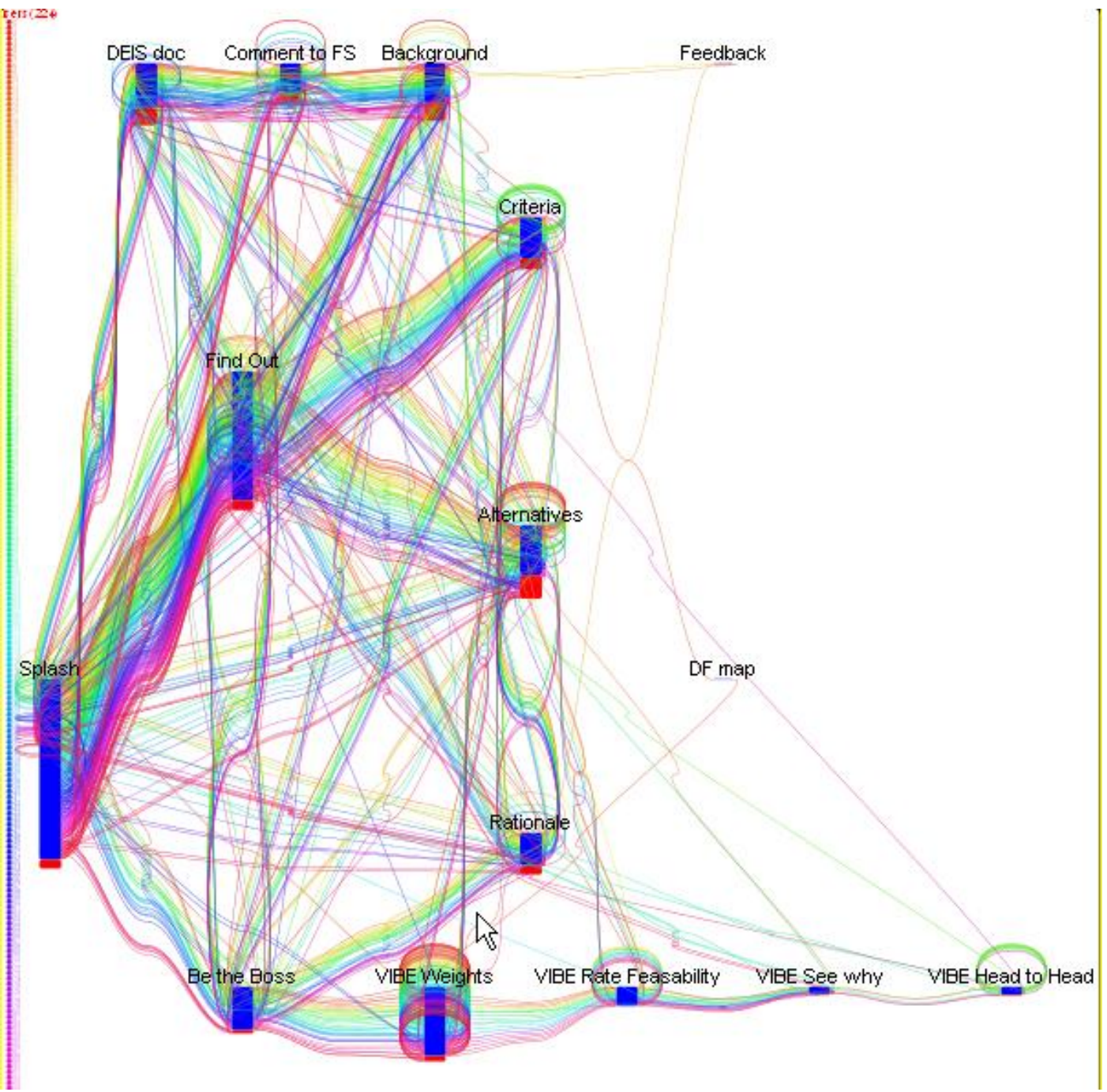
Alternative D could negatively affect aesthetics. This alternative would have a preference for managed wildfire.

For further details, read the following section in the DEIS

[DEIS Vol I, Chapter 4, Human Uses, Scenery section.]

To read this section of the Draft EIS online, click [here to go to the Limehouse GSNM](#)

GSNM DEIS 2010 Comment Period Tracks



Presidential *Proclamation*



Carie Fox: cf@daylightdecisions.com

Rich Fairbanks: r_fairbanks@q.com

Philip Murphy: philipmurphy@infoharvest.com



Art by Thom Cheney

